

# #MSDSTRONG THREE YEARS LATER LOCAL, COMMUNITY, AND NATIONAL PERSPECTIVES

Understanding the  
Complexity of Trauma and  
Grief in Communities After  
Mass Violence

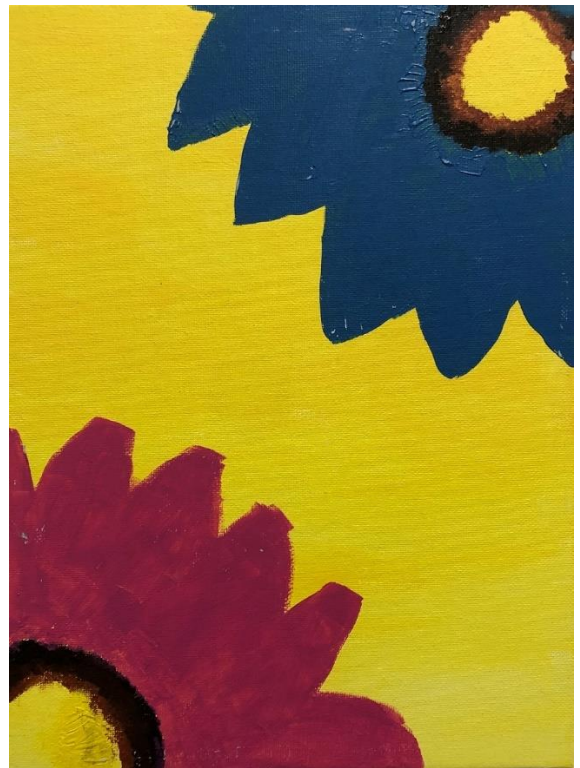
**Melissa Brymer, Ph.D., Psy.D.**

NSU Alumna | Director of Terrorism and Disaster  
Programs at UCLA/Duke University National Center for  
Child Traumatic Stress

Friday, February 12, 2021, 12:00 P.M. EST  
Register [HERE](#)

This presentation will review the key concepts for understanding mass violence, strategies for supporting communities after such events, and ways we can strengthen support to those most impacted. The presentation will also highlight ways providers need to care for themselves as they do this work.

**Free webinar | Share with family and friends!**  
[www.nova.edu/sharkchats](http://www.nova.edu/sharkchats)



Art by Olivia Feldman, a survivor of the Marjory Stoneman Douglas shooting.

## *#MSD Strong Panel*

### *Introduction*

**Scott Poland, EdD.**, NSU Professor and the  
Director of the Suicide and Violence Prevention  
Office

### *Moderator*

**Ralph E. (Gene) Cash, Ph.D., ABPP, NCSP**,  
Past-President, Trainers of School  
Psychologists, National Association of School  
Psychologists, and Florida Association of School  
Psychologists

**Peter Caproni, Ph.D.**, NSU Associate  
Professor/Doctoral Practicum Coordinator,  
Director of Training for NSU's Psychology  
Postdoctoral Residency Program,  
Consulting/Supervising Psychologist at NSU  
University School

**David M. Feldman, Ph.D.**, MSD Parent and  
NSU Associate Professor

**Iryna Kasi, Ph.D.**, NCSP, NSU Assistant  
Professor and First Responder to Crisis

**Olivia Feldman**, MSD Graduate, University of  
South Florida Student